

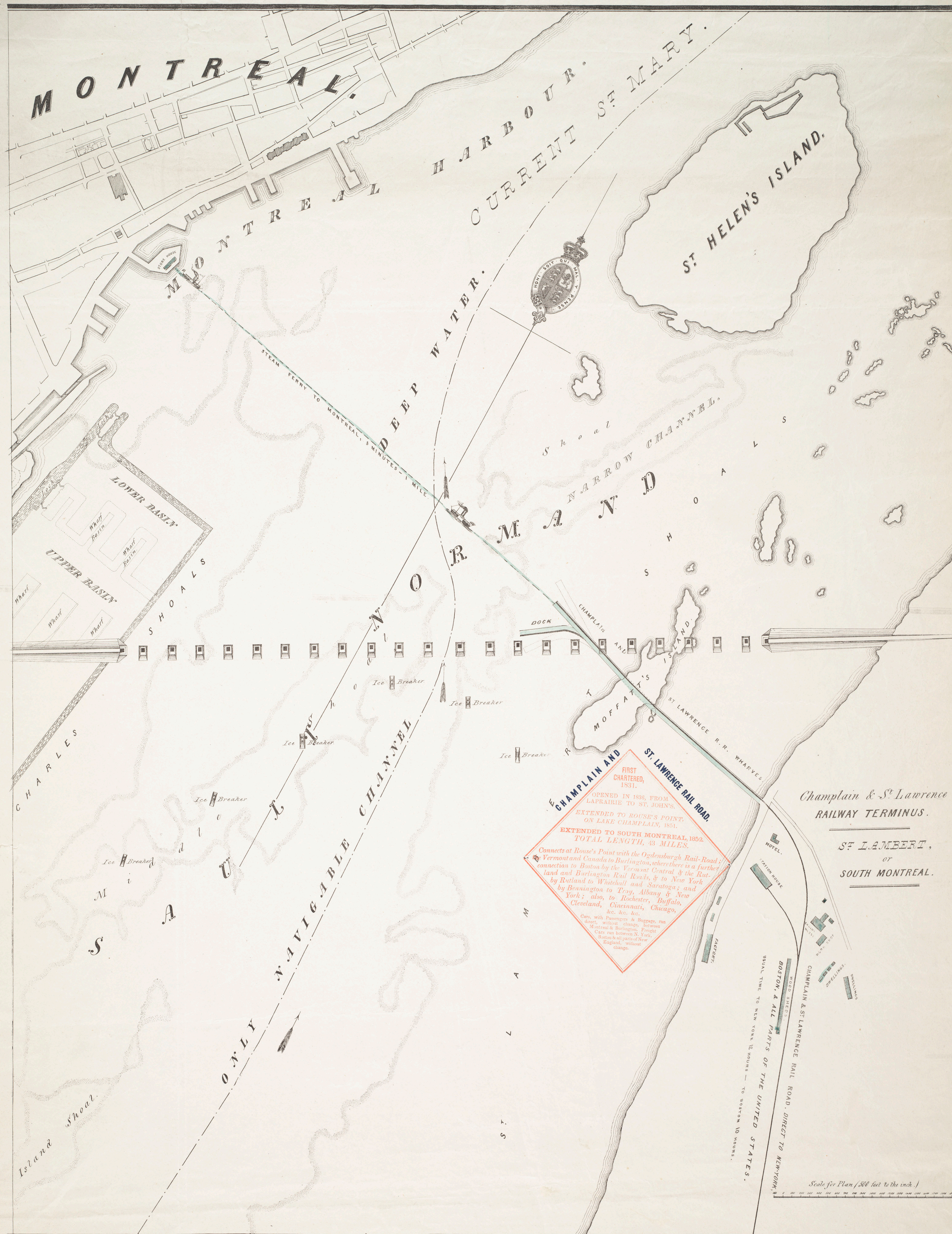
The RAILWAY Bridge over the St. Lawrence at Montreal

SURVEYED BY ORDER OF THE COMMITTEE, MONTREAL & KINGSTON R.R.

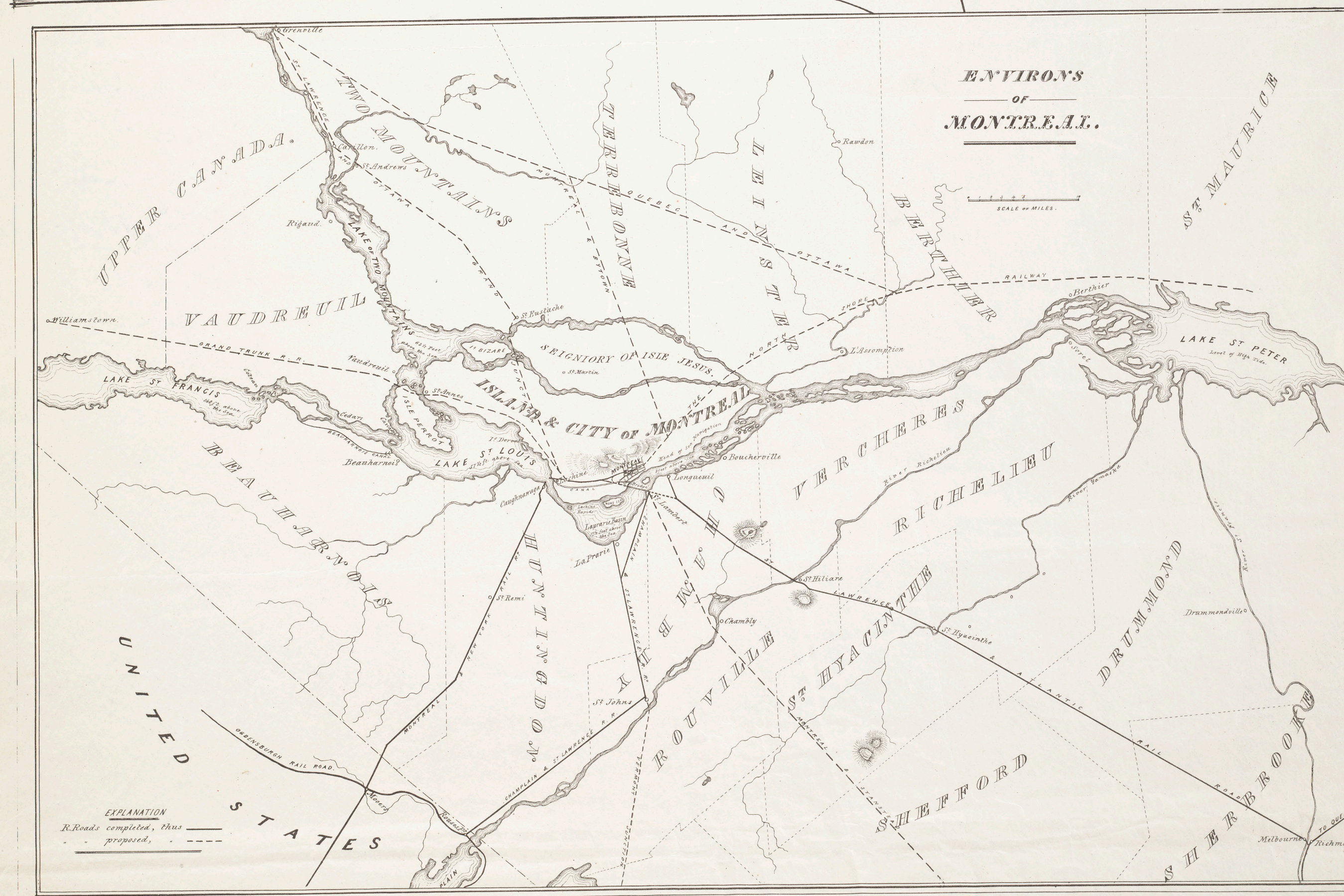
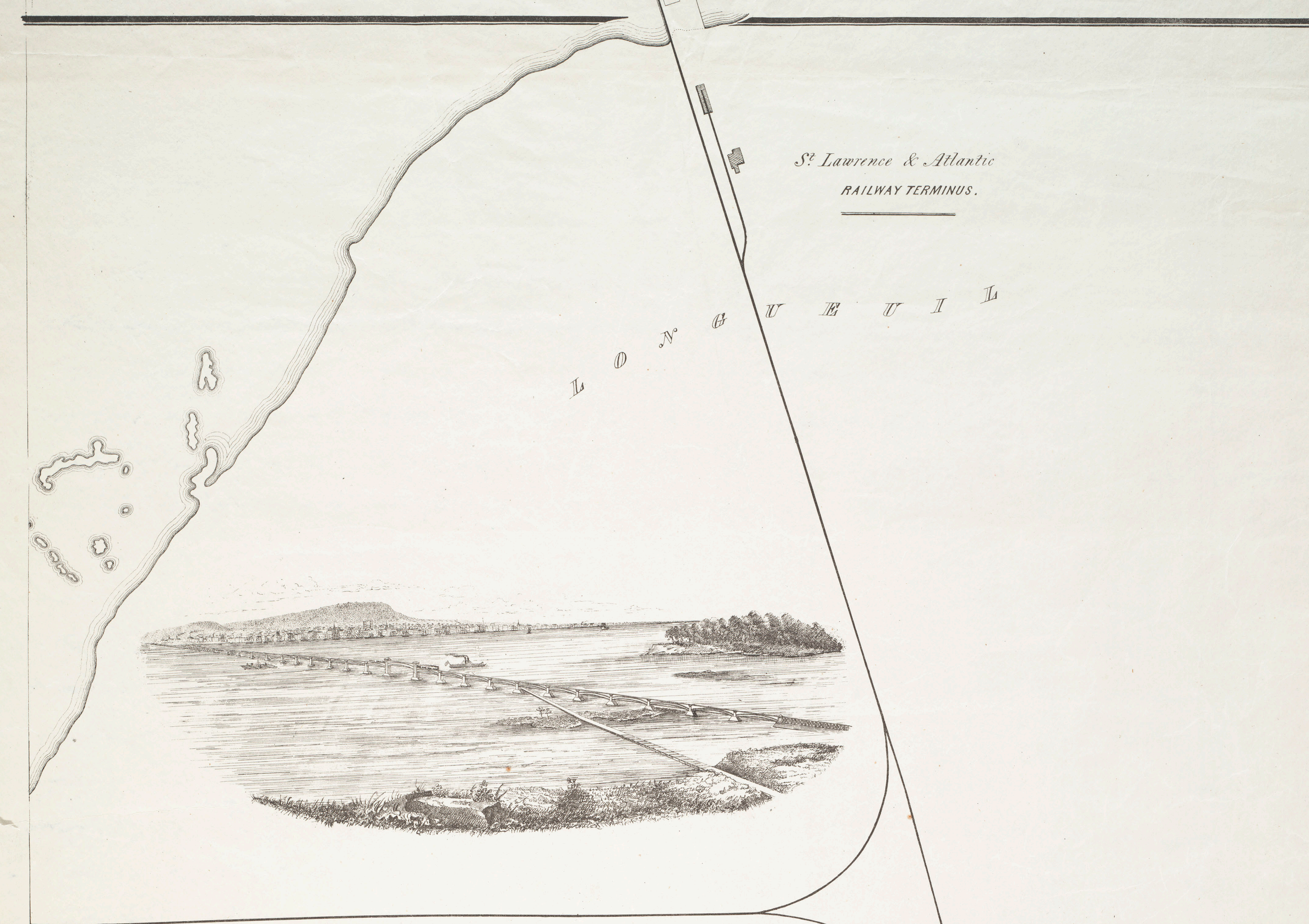


MONTREAL.
Point St. Charles.

ELEVATION OF BRIDGE



, LENGTH TWO MILES, HEIGHT OF CENTRE ARCH OVER ONLY NAVIGABLE CHANNEL,



ONE HUNDRED FEET.